



TOSHIBA POS Terminal

ST-B10

MS-DOS Setup Guide

First Edition : February 26, 2010

TOSHIBA TEC CORPORATION

Table of Contents

1. Overview	2
2. Setup for MS-DOS 6.22 Environment	3
2.1. Installation for Operating System (MS-DOS 6.22)	3
2.2. Installation for VIA Network Driver	16
3. Using our peripherals with MS-DOS Environment	29
3.1. Platform	30
3.2. Drawer	30
3.3. Printer	30
3.4. Line Indicator Unit (LIU)	30
3.5. MSR	30
3.6. Keyboard	30
4. Notice and Limitation	31
4.1. Notice	31
4.1.1. About DOS	31
5.2. Limitation	31
5.2.1. Limitation about DOS	31

Copyright © 2010 Toshiba TEC Corporation All rights reserved. It is prohibited to use or duplicate a part or whole of this document without the permission of Toshiba TEC Corporation.

This document is subject to change without prior notice.

Trademark Notification

- * Microsoft and MS-DOS are registered trademarks of Microsoft Corporation in the United States and/or other countries.
- * All other product names mentioned in this document are trademarks or registered trademarks of their respective owners.

1. Overview

This document describes the procedures and notes for setting & installing the MS-DOS 6.22 to ST-B10.

The outline of procedures to install MS-DOS on the ST-B10 is as follows:

MS-DOS Setup Procedure

- 1) Installation for Operating System
- 2) Installation for VIA Network Driver

2. Setup for MS-DOS 6.22 Environment

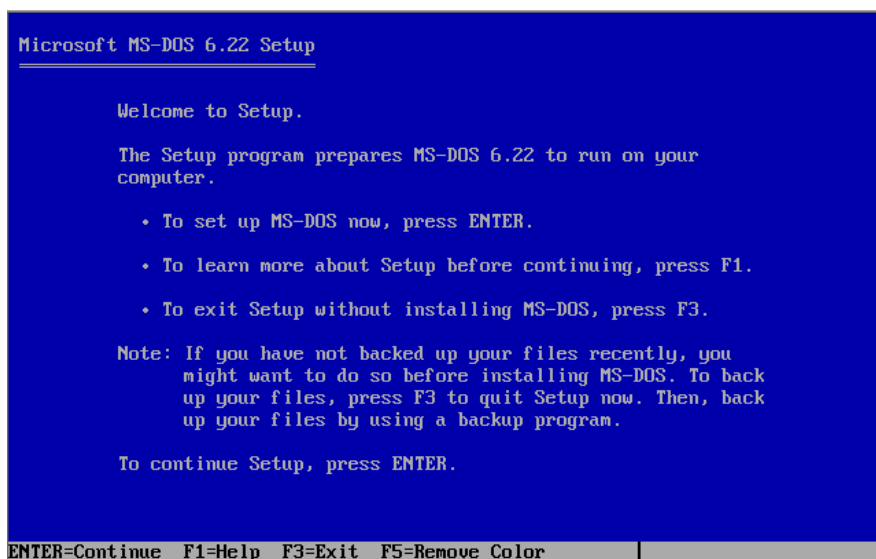
2.1. Installation for Operating System (MS-DOS 6.22)

This procedure is written with the situation that you have the FD of 'MS-DOS 6.22 Update'. Therefore, please use this information with customizing for your environment.

First, you set floppy disk (MS-DOS 6.22 Disk1) and turn on the ST-B10.
Then below message appears.



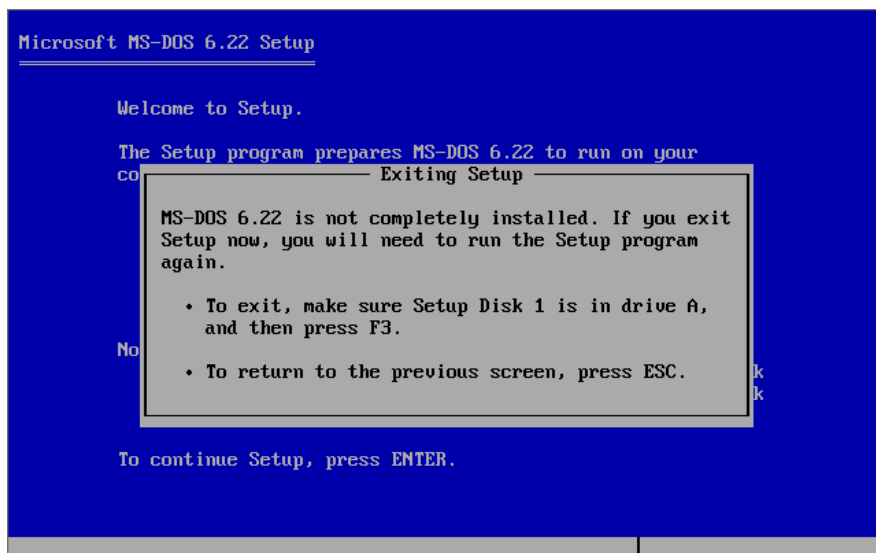
And wait more while, below message appears.



In usual situation, ST-B10 doesn't have DOS system internally. Because the ST-B10 has empty HDD (No data) in initial status, it is occur.

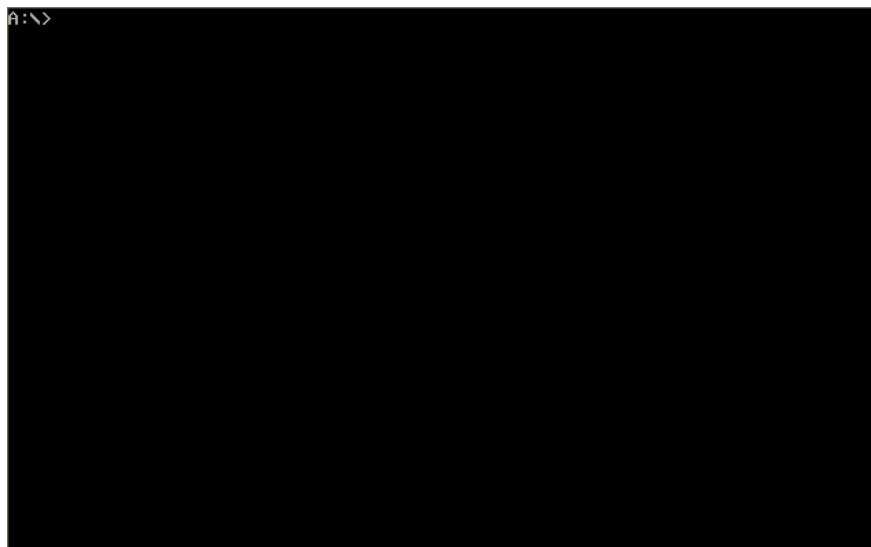
First, you have to prepare the DOS system with below process.

Press F3, then below message appears



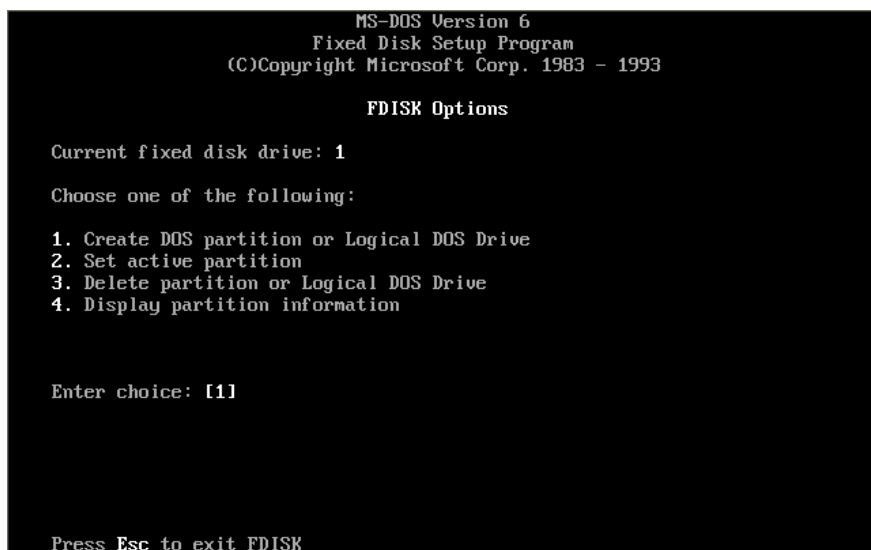
Press F3 again, then system exits the setup of MS-DOS.

After a while, below message appears.



Then, type 'FDISK' and press 'Enter'.

After a while, below message appears.



Press '1' Key and press Enter.

After a while, below message appears.

```
                                Create DOS Partition or Logical DOS Drive

Current fixed disk drive: 1

Choose one of the following:

1. Create Primary DOS Partition
2. Create Extended DOS Partition
3. Create Logical DOS Drive(s) in the Extended DOS Partition

Enter choice: [1]

Press Esc to return to FDISK Options
```

Press '1' Key and press Enter.

After a while, below message appears.

```
                                Create Primary DOS Partition


Current fixed disk drive: 1

Do you wish to use the maximum available size for a Primary DOS Partition
and make the partition active (Y/N).....? [Y]

Press Esc to return to FDISK Options
```

Press 'Y' Key.

After a while, below message appears.



```
System will now restart  
Insert DOS system diskette in drive A:  
Press any key when ready . . . _
```

Press any Key, then ST-B10 reboots, and MS-DOS installer appears.

Next, please go to the prompt message same as the above procedure.



```
A:\>
```

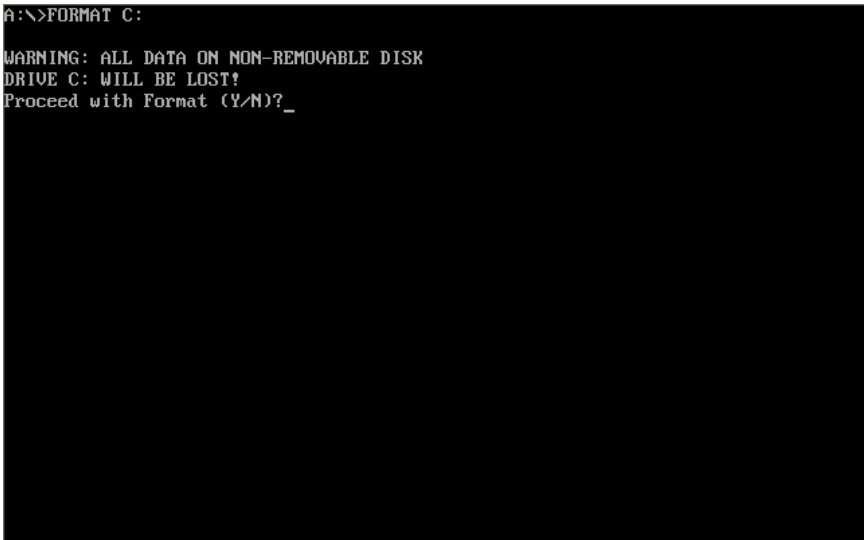
Then, type 'FORMAT C:' and press 'Enter'.

```
A:\>FORMAT C:_
```



After a while, below message appears.

```
A:\>FORMAT C:
WARNING: ALL DATA ON NON-REMOVABLE DISK
DRIVE C: WILL BE LOST!
Proceed with Format (Y/N)?_
```



Type 'Y' and press 'Enter'

After a while, below message appears.

```
A:\>FORMAT C:

WARNING: ALL DATA ON NON-REMOVABLE DISK
DRIVE C: WILL BE LOST!
Proceed with Format (Y/N)?y

Formatting 2039.59M
 21 percent completed.
```

After a while, below message appears.

```
A:\>FORMAT C:

WARNING: ALL DATA ON NON-REMOVABLE DISK
DRIVE C: WILL BE LOST!
Proceed with Format (Y/N)?y

Formatting 2039.59M
Format complete.

Volume label (11 characters, ENTER for none)?
```

Press 'Enter'. (Use default setting)

After a while, below message appears.

```
A:\>FORMAT C:

WARNING: ALL DATA ON NON-REMOVABLE DISK
DRIVE C: WILL BE LOST!
Proceed with Format (Y/N)?y

Formatting 2039.59M
Format complete.

Volume label (11 characters, ENTER for none)?

2,138,374,144 bytes total disk space
2,138,374,144 bytes available on disk

        32,768 bytes in each allocation unit.
        65,258 allocation units available on disk.

Volume Serial Number is 2A5A-16F6

A:\>_
```

Next, type 'Setup /G' and press 'Enter'.

```
A:\>FORMAT C:

WARNING: ALL DATA ON NON-REMOVABLE DISK
DRIVE C: WILL BE LOST!
Proceed with Format (Y/N)?y

Formatting 2039.59M
Format complete.

Volume label (11 characters, ENTER for none)?

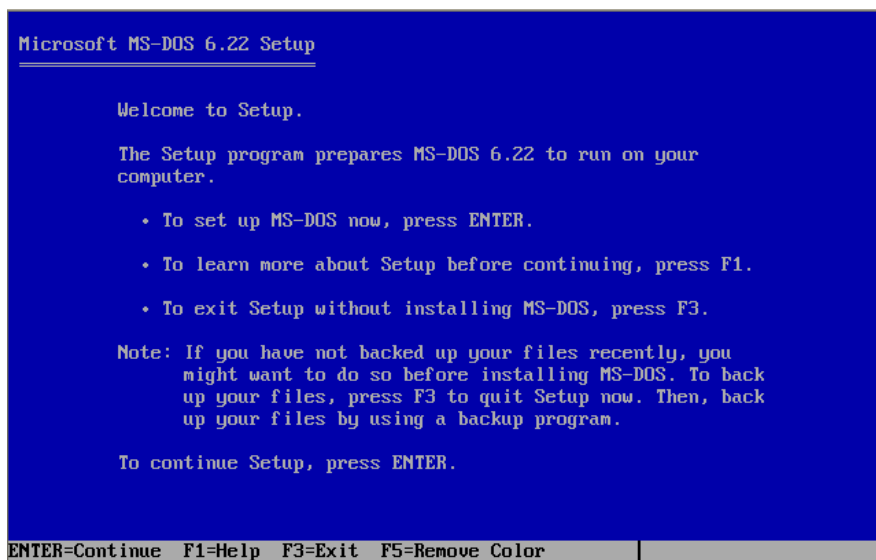
2,138,374,144 bytes total disk space
2,138,374,144 bytes available on disk

        32,768 bytes in each allocation unit.
        65,258 allocation units available on disk.

Volume Serial Number is 2A5A-16F6

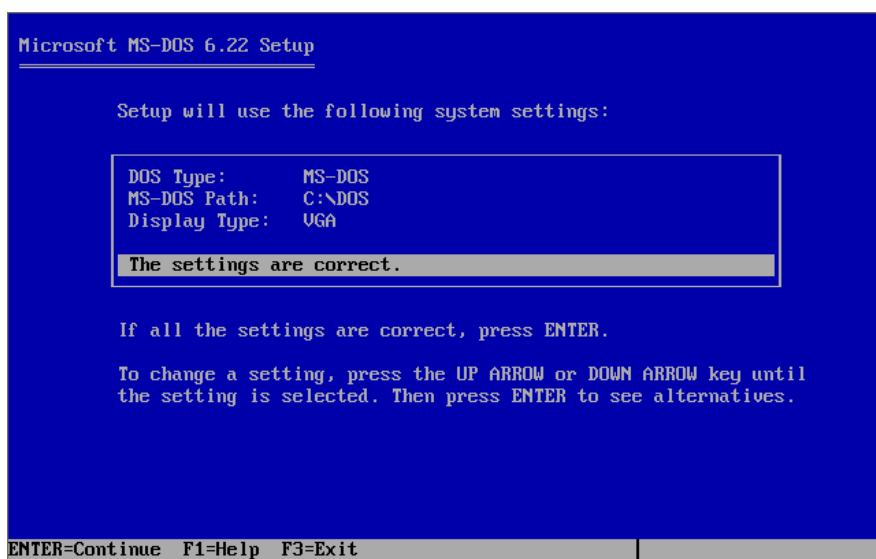
A:\>SETUP /G
```

After a while, system starts the MS-DOS setup.



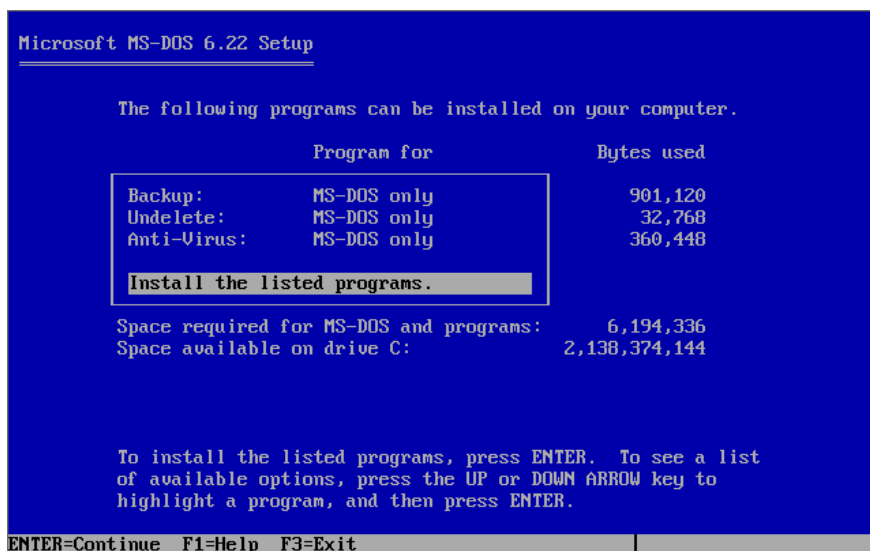
Press 'Enter'.

After a while, below message appears.



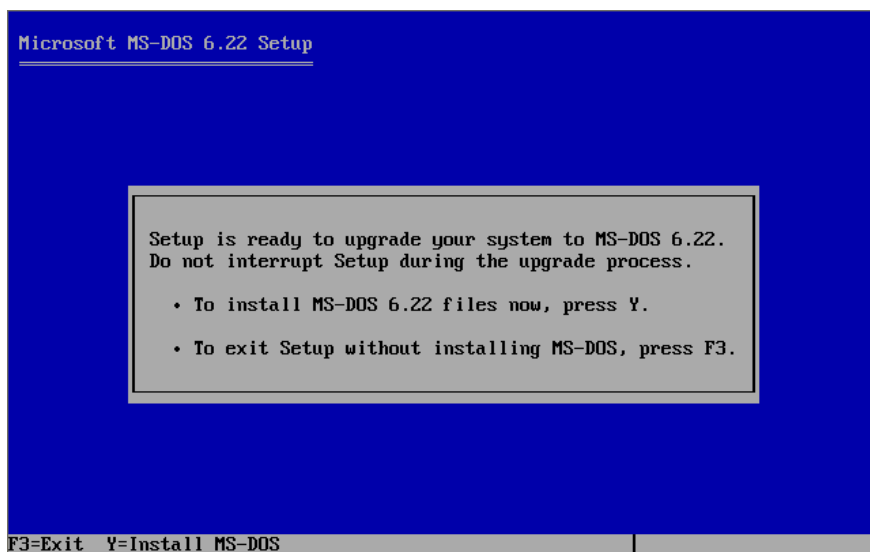
Confirm the contents, and press 'Enter'.

After a while, below message appears.



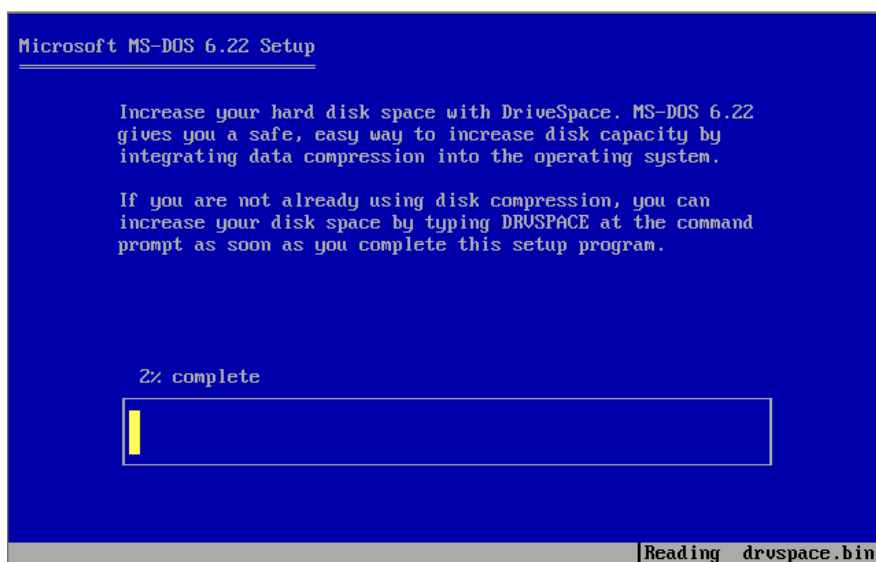
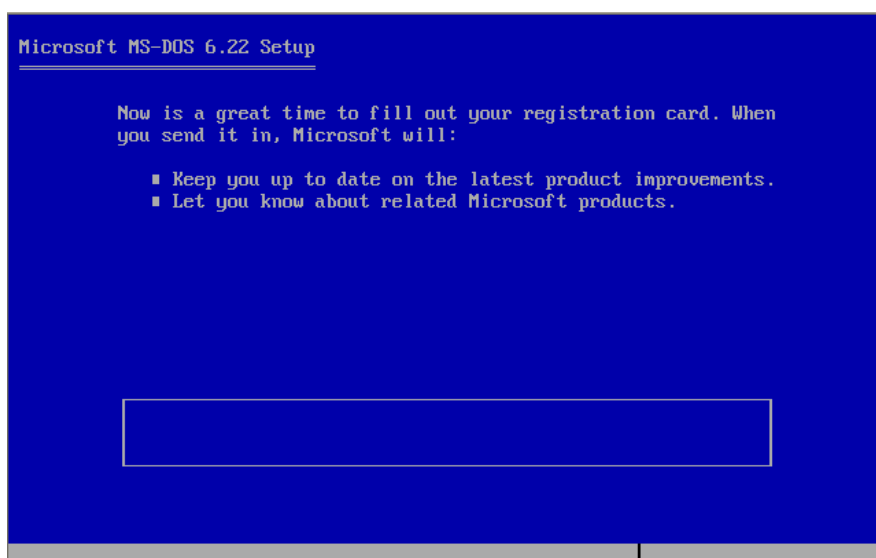
Confirm the contents, and press 'Enter'.

After a while, below message appears.

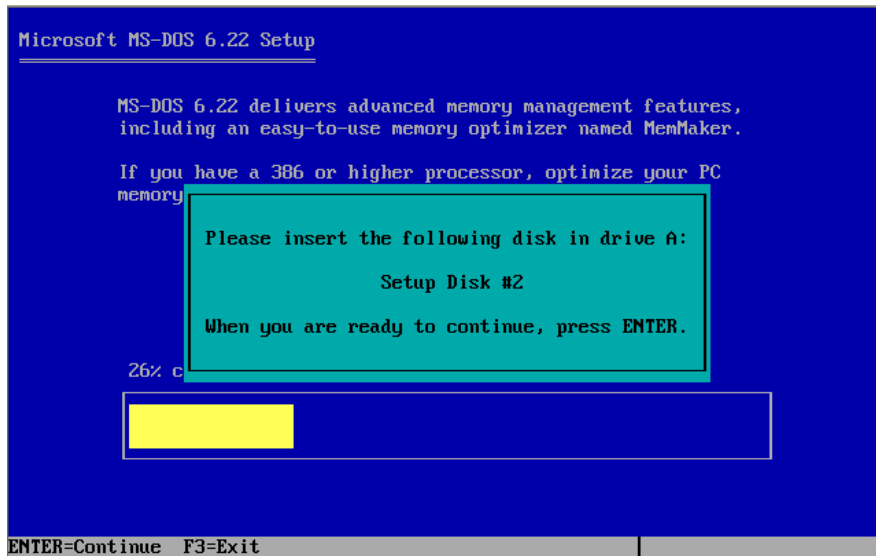


Confirm the contents, and press 'Y'.

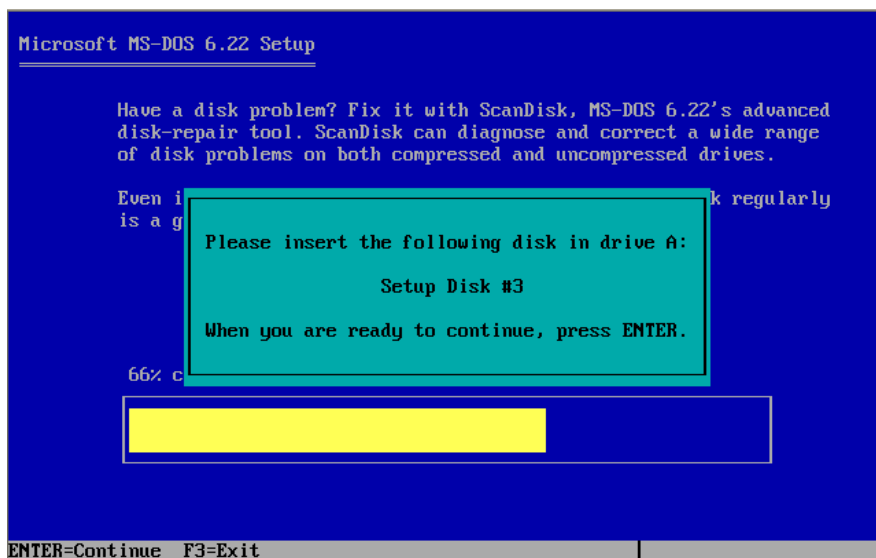
MS-DOS installation process starts as below.



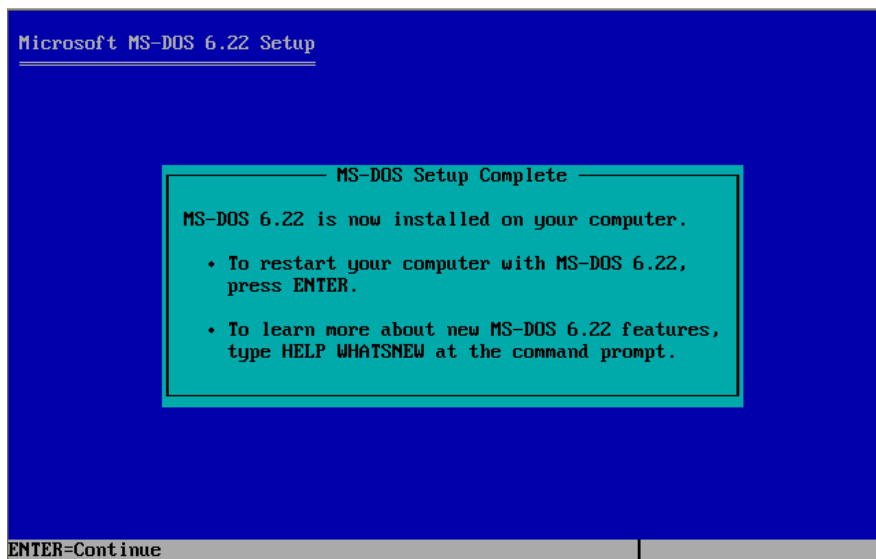
After a while, system request to change the next FD (floppy disk # 2)
Please change the disk from #1 to #2.
And press 'Enter'.



After a while, system request to change the next FD (floppy disk # 3)
Please change the disk from #2 to #3.
And press 'Enter'.

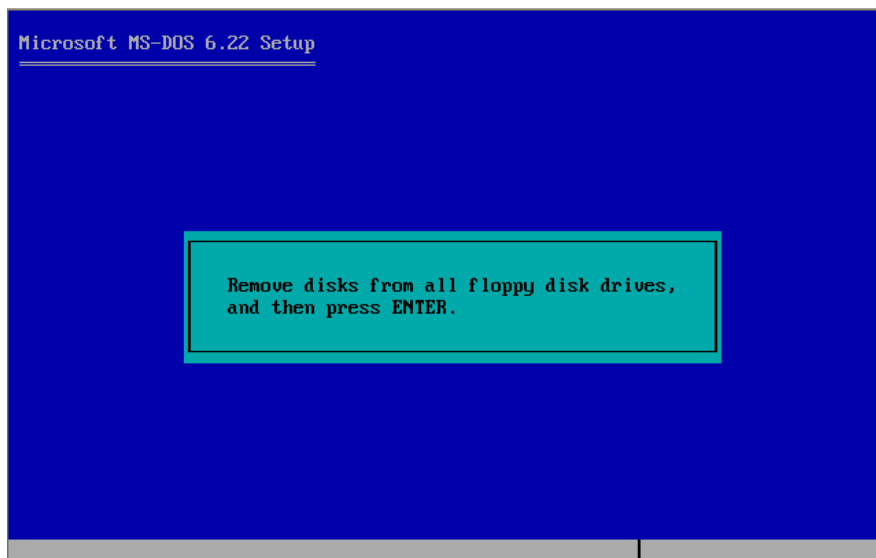


After a while, below message appears.



Press the 'Enter'.

After a while, below message appears.



Press the 'Enter'.

Then, system reboots, and the MS-DOS 6.22 executes.

2.2. Installation for VIA Network Driver

This document is mentioned with the following premise.

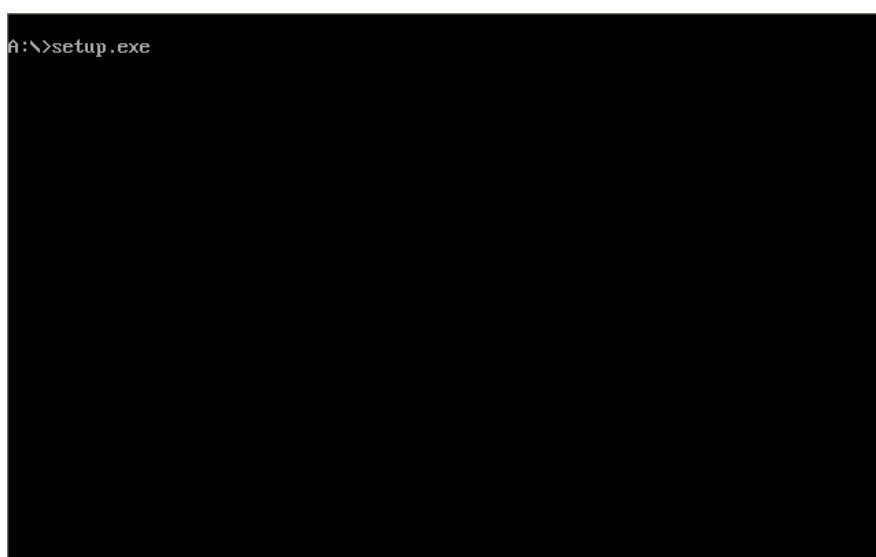
- Here is the LAN Manager (by Microsoft) application.
- Using LAN Manager with ST-B10.
- Prepared the VIA Network driver with ST-B10.

Note) If you use other application for LAN management, please see the information provided by application vendor.

First, setup the LAN Manager with ST-B10.

Set the 'LAN Manager Setup floppy disk' to drive.

And move floppy disk drive, then, type 'setup.exe' and press 'Enter'.



After a while, below message appears.



Press the 'Enter'.

After a while, below message appears.



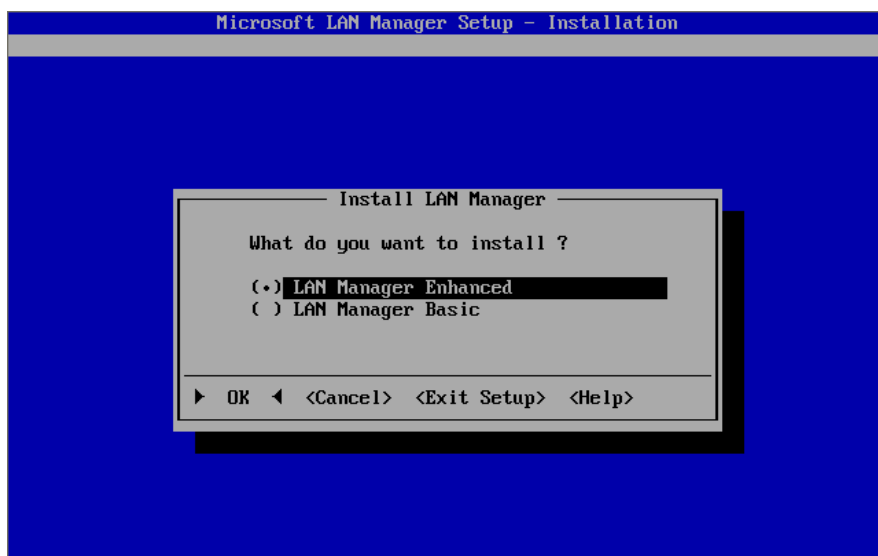
Press the 'Enter'.

After a while, below message appears.



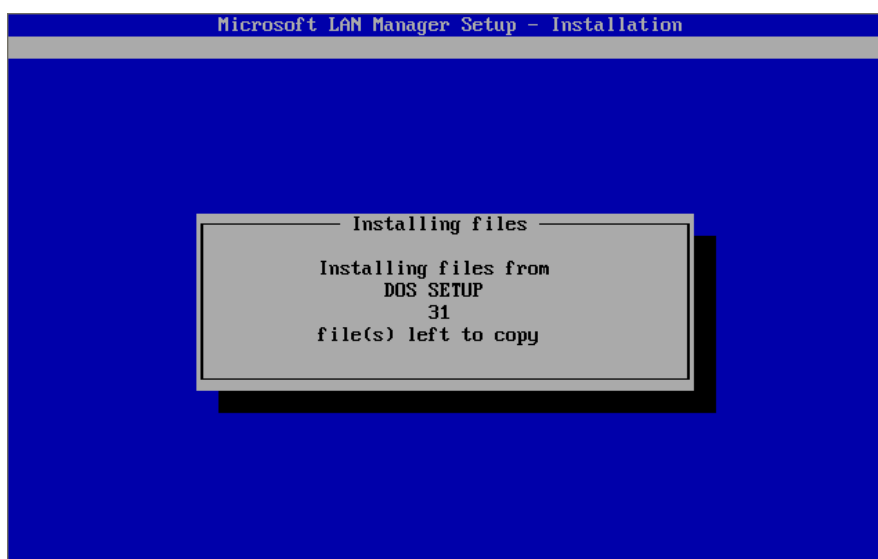
If you hope to modify the direction of LAN driver installation, please modify this setting. Then you have decided it, press the 'Enter'.

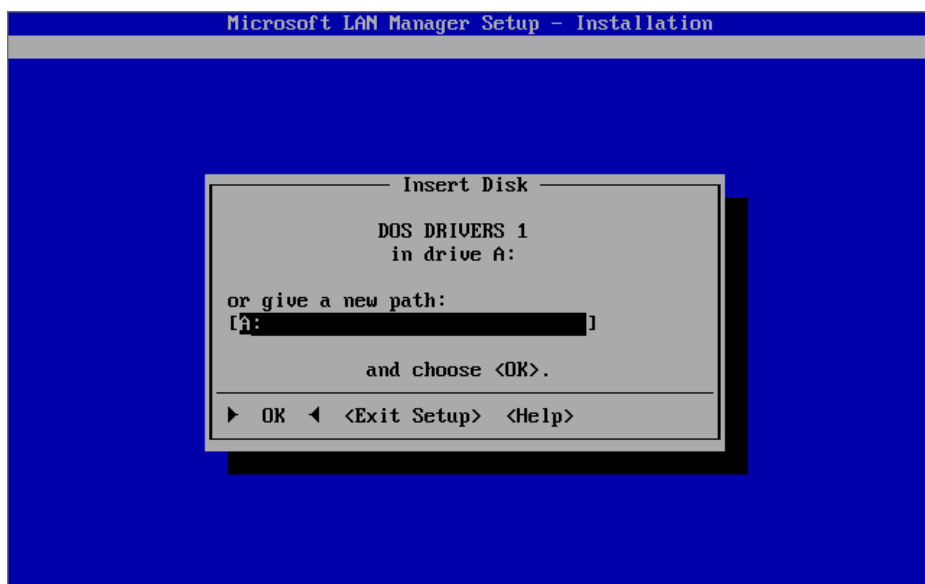
After a while, below message appears.



Press the 'Enter'. (We recommend to selecting the 'LAN Manager Enhanced'.)

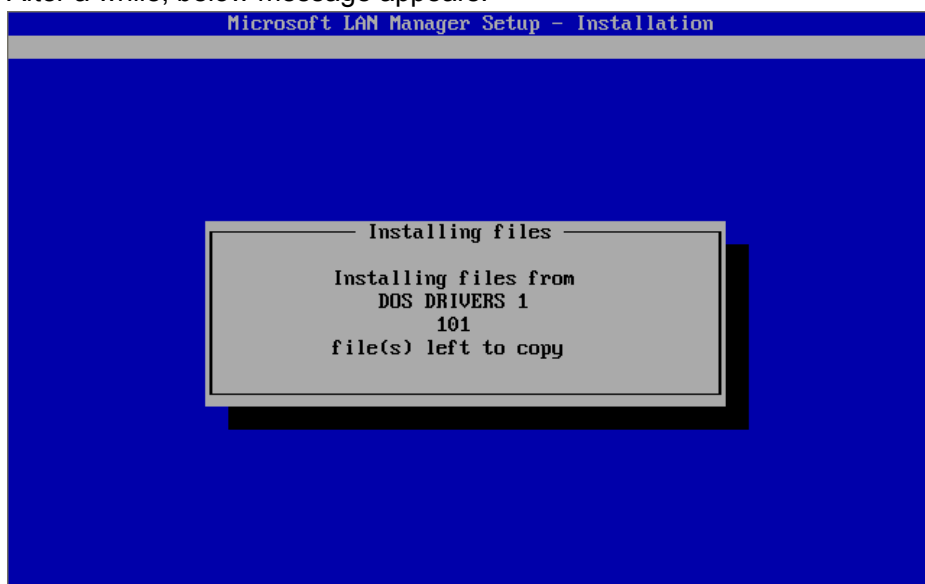
After a while, below message appears.



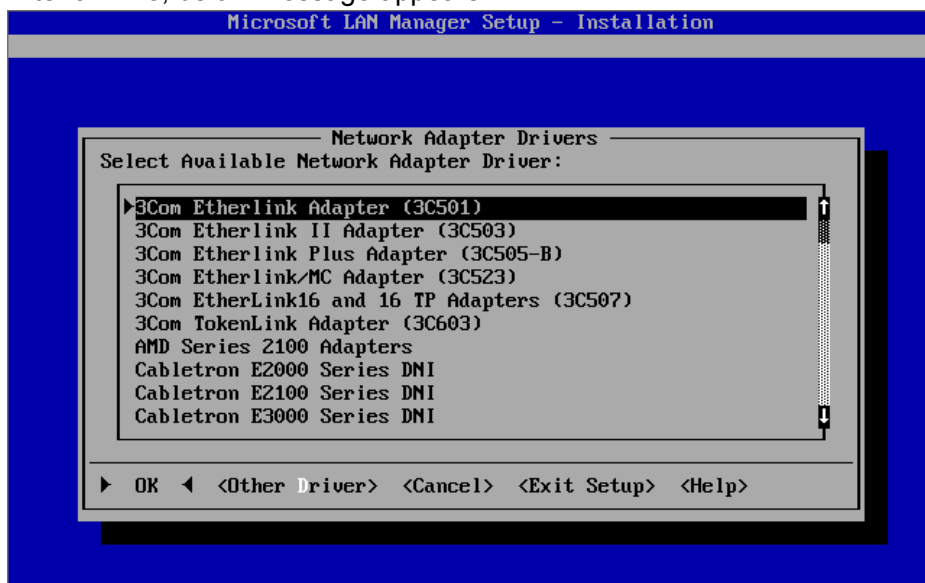


Then, change the floppy disk from 'first FD' to 'second FD' and press the 'Enter'.

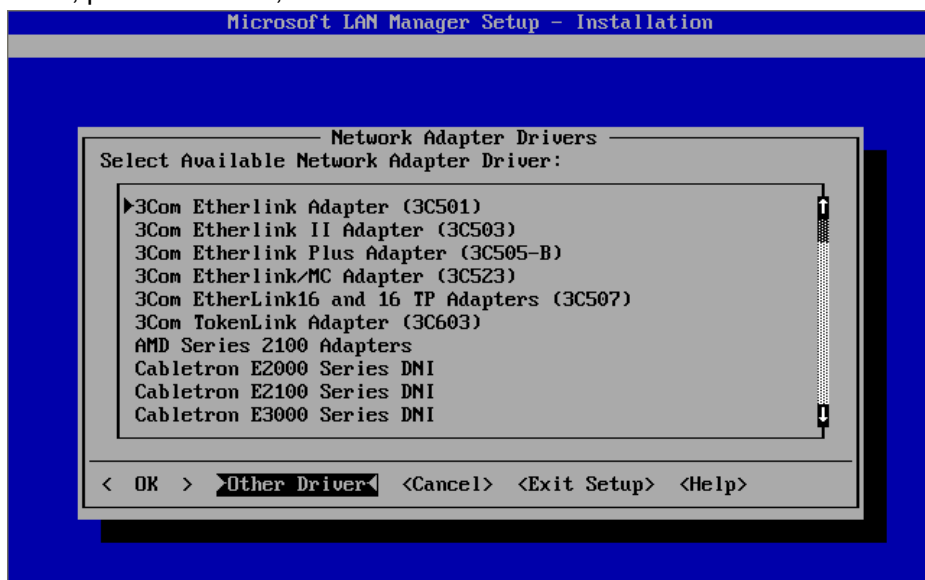
After a while, below message appears.



After a while, below message appears.



Then, press the 'TAB', and select the 'Other Driver' menu as below.



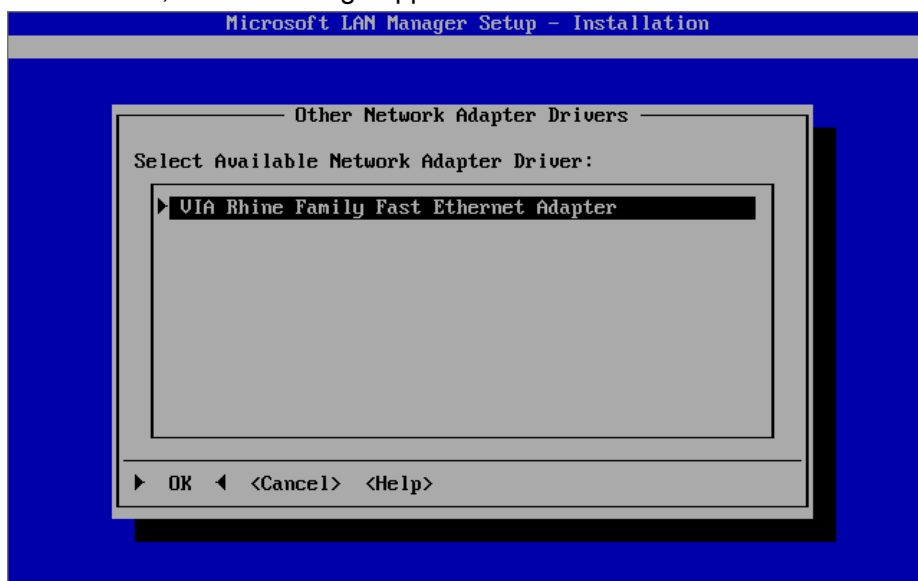
And press the 'Enter'.

After a while, below message appears.



Then, change the floppy disk from 'second FD' to 'VIA LAN Driver FD' and press the 'Enter'.

After a while, below message appears.

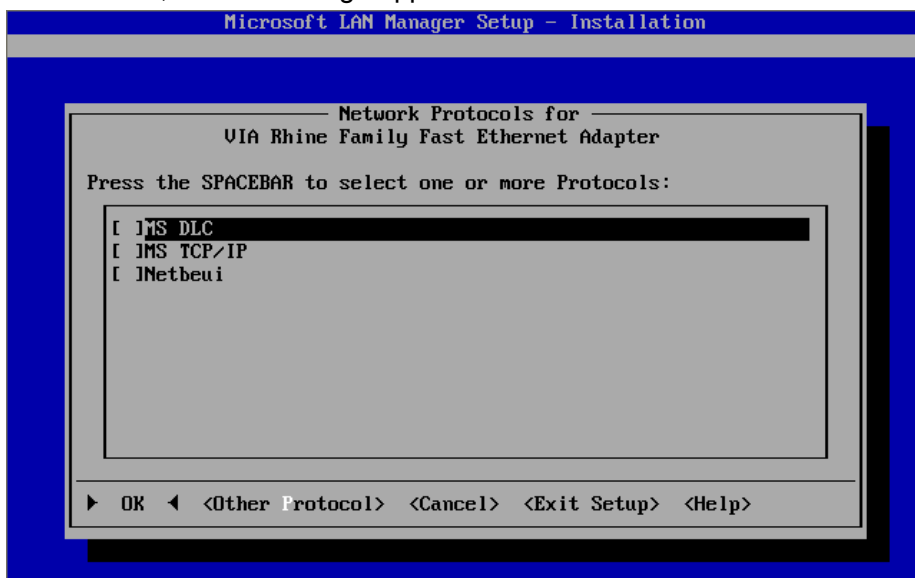


Press the 'Enter'.

After a while, below message appears.



After a while, below message appears.



Then, select the protocols you needed. (In this manual, we select all protocols)
And press the 'Enter'

After a while, below message appears.



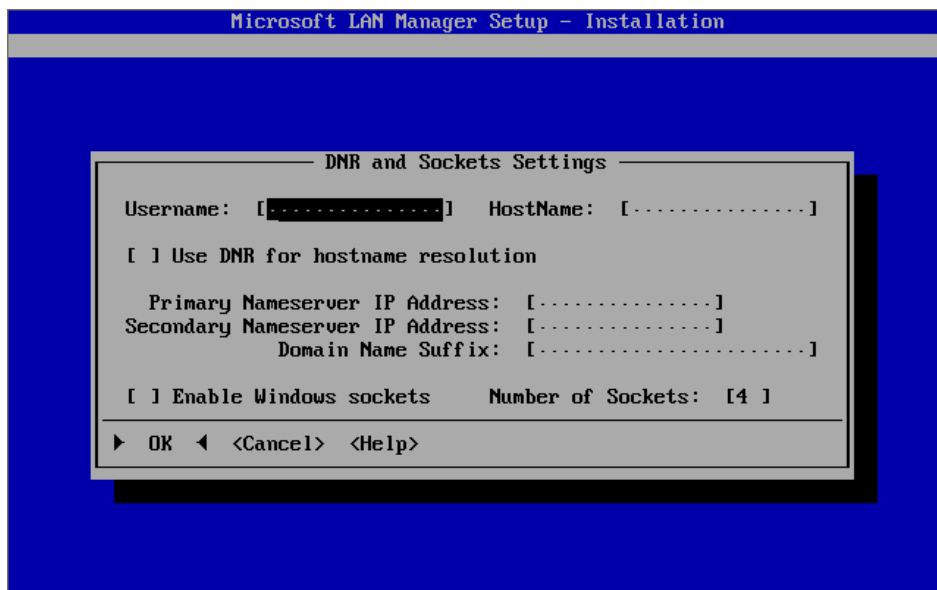
Press the 'Enter'

After a while, below message appears.



Set the parameter as your network environment.

If you choose the 'Advanced...' menu and you press the 'Enter', below message appears.



Set the parameter as your network environment.

And press the 'Enter'.

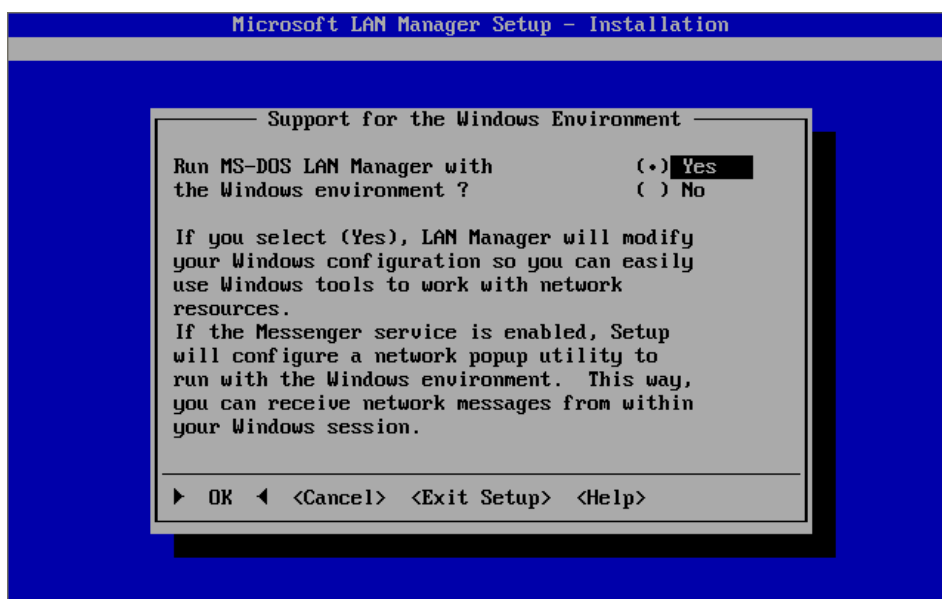
If you don't choose the 'Advanced...' menu and you press the 'Enter', below message appears.



Set the parameter as your network environment.

And press the 'Enter'.

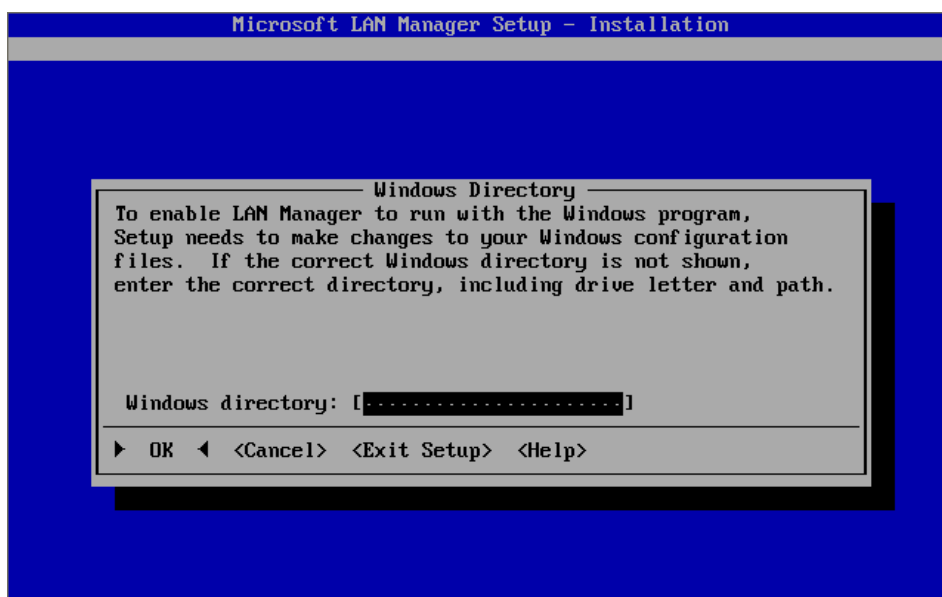
After a while, below message appears.



Set the parameter as your network environment.

And press the 'Enter'.

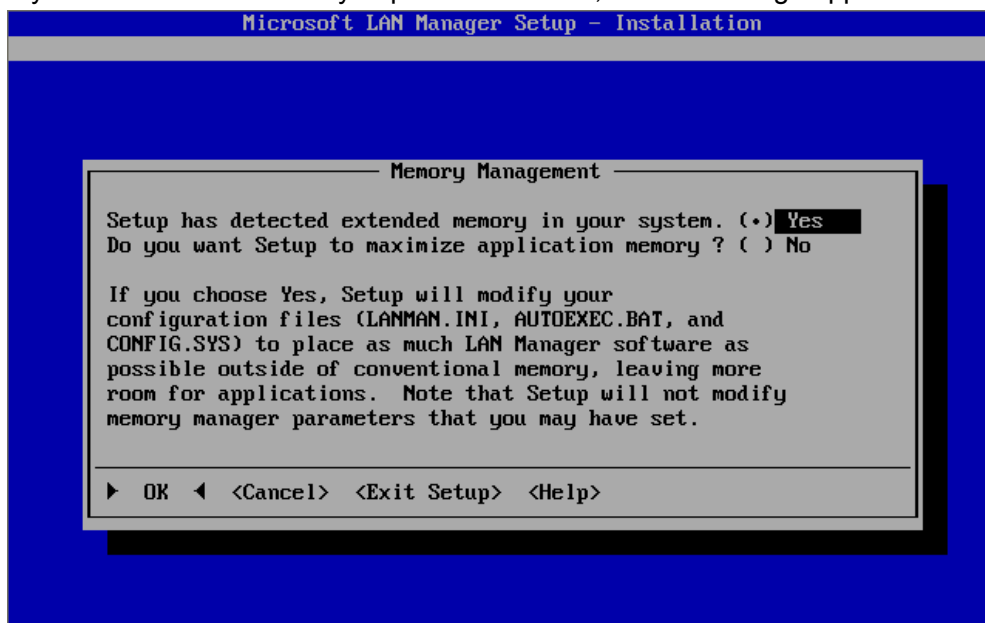
If you choose the 'Yes' and you press the 'Enter', below message appears.



Set the parameter as your network environment.

And press the 'Enter'.

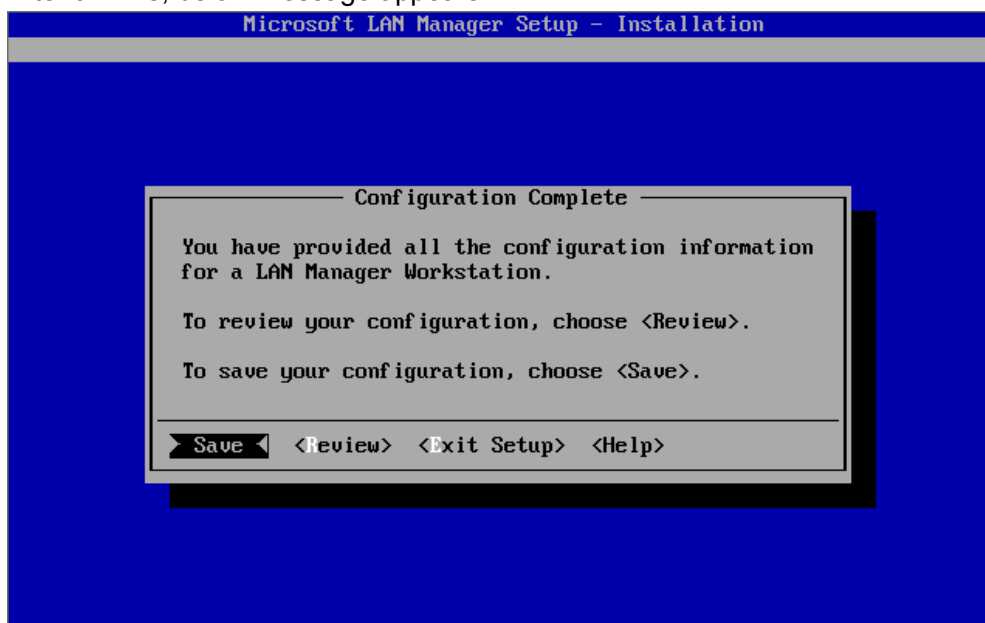
If you choose the 'No' and you press the 'Enter', below message appears.



Set the parameter as your network environment.

And press the 'Enter'.

After a while, below message appears.



Press the 'Enter'.

After a while, below message appears.



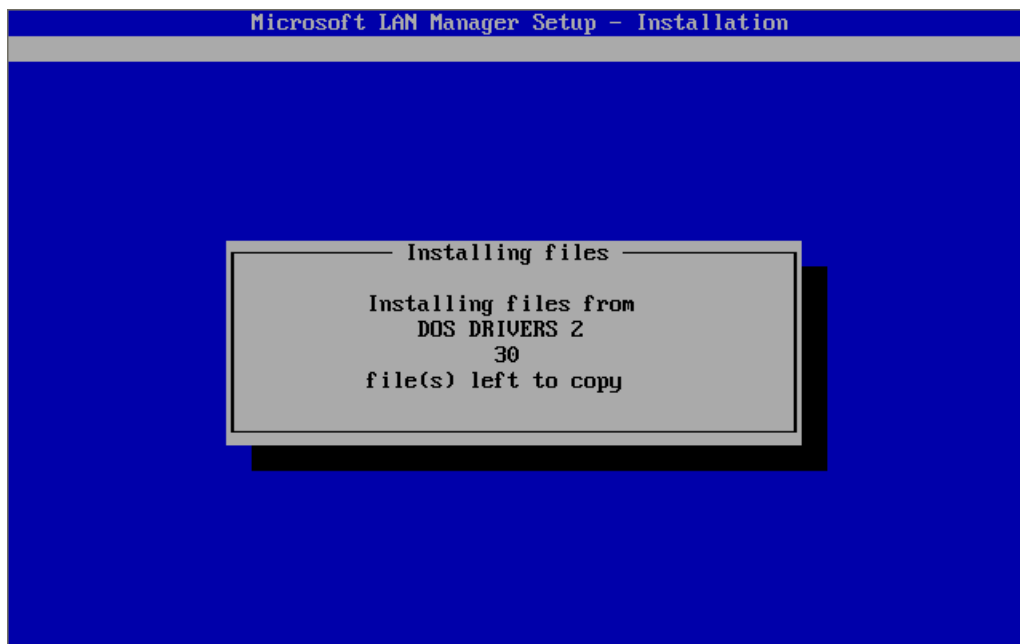
Then, re-change the floppy disk from 'VIA LAN Driver FD' to 'second FD' and press the 'Enter'.

After a while, below message appears.

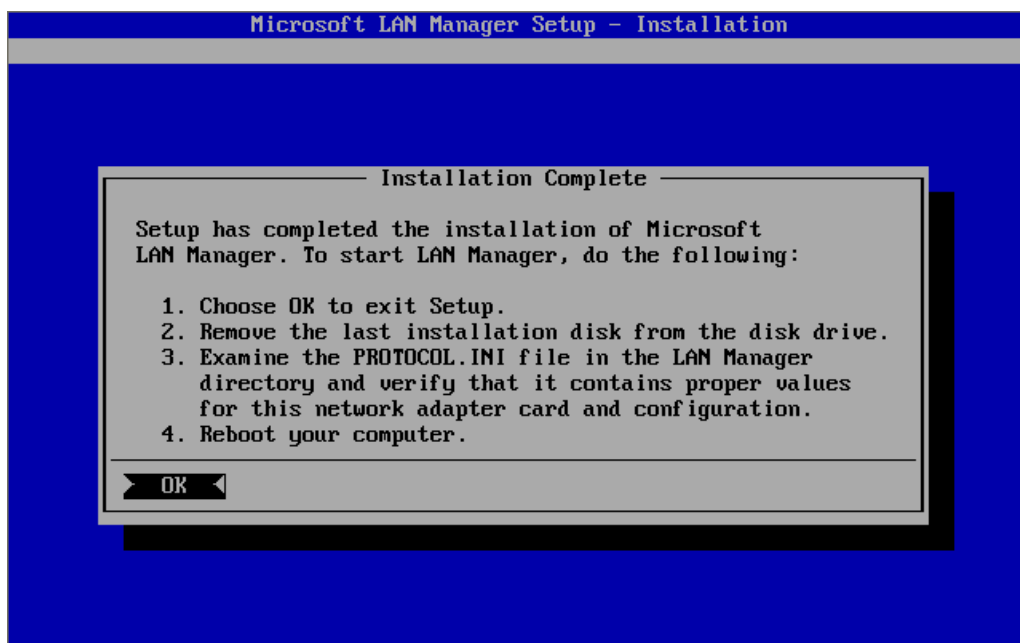


Then, change the floppy disk from 'second FD' to 'Third FD' and press the 'Enter'.

After a while, below message appears.



After a while, below message appears.



Press the 'Enter'.

Then, DOS prompt appears.

Next, please shutdown your terminal, and power on the terminal.

Then, Network driver is loaded on your terminal.

So, type the 'msd' and press 'Enter', you can see the Network information in diagnostic program.

You can see the setting of LAN as with PROTOCOL.ini file.

3. Using our peripherals with MS-DOS Environment

Basically, you can use below devices with legacy access method of MS-DOS.

These contents mentioned about using POS peripherals.

Port		Device	DOS Support
LCD/Monitor	RGB	PA80BPNB / PA80BPNW PA15BPNB / PA15BPNW TFTST-A20-2A1NK/F-QM-R TFTST-A20-5A1NK/F-QM-R TFTST-A20-2A2NK/F-QM-R TFTST-A20-5A2NK/F-QM-R TFTST-B20-2A2PK/F-QM-R TFTST-B20-5A2PK/F-QM-R	Can use(*1)
	LVDS	TFTST-A20-2L2NK/F-QM-R TFTST-A20-5L2NK/F-QM-R	Can use(*1)
Keyboard	PS2	PKBST-50-3-K-QM-R PKBST-50-3-QM-R	Can use
	USB	PKBST-52-4M5-QM-R(FW-2, with MSR) PKBST-52-4-QM-R(FW-2, without MSR) PKBST-52-4M5-K-QM-R(CB, with MSR) PKBST-52-4-K-QM-R(CB, without MSR)	Can use(*2)
Drawer	TTEC	DRWST-51A-8MV(K)-QM-R DRWST-56EMV-QM-R 420R 48G2 BCT 420R 48IVO BCT	Can use
Printer	USB	TRST-A10SC/F1-QM-R TRST-A10SC/F2-QM-R TRST-A15SC/F-QM-R TRST-A10SC/F1-CN-R TRST-A00-UF/C-QM-R TRST-A00-UF/C-CN-R	Cannot use
	RS232	TRST-A00-DF/C-QM-R TRST-A00-DF/C-CN-R	Can use
LIU	RS232	LIUST-51-1AK/F-QM-R LIUST-A10 WD-1012000008 / WD-1012000018	Can use
MCR	RS232	MCRSTA10	Can use(*3)
	PS2	MCR of PKBST50(MCRST-50-3-QM-R)	Can use
	USB	MCR of PKBST52	Cannot use

Note)

*1: Touch Panel & MCR cannot be used with TFTST-A20-*L*

(COM5 & COM6 cannot be used by DOS)

Basically, Touch Panel & MCR cannot be used with TFTST-A20/B20 & PA.

*2: Only keypad can be used for Key board, but Key code download tool cannot support DOS.

If you want to tune the Key code of PKBST52, you have to prepare the Windows environment.

*3: MCRST-A10 only can be used with TFTST-A(B)20-*A*.

3.1. Platform

Platform device is mapped specify I/O memory in ST-B10.

About detail of mapping address and access procedure, please see documents below.

About H/W information: ***Product specification for TOSHIBA TEC POS Terminal (ST-B10)***

3.2. Drawer

Drawer device is mapped specify I/O memory in ST-B10.

About detail of mapping address and access procedure, please see documents below.

Port Information: ***Product specification for TOSHIBA TEC POS Terminal (ST-B10)***

3.3. Printer

About detail of command I/F and COM setting, please see documents below.

TRST-A00-DF/C-QM-R: ***Product specification for TOSHIBA TEC POS Printer (TRST-A00)***

TRST-A00-DF/C-CN-R: ***Not available.***

3.4. Line Indicator Unit (LIU)

About detail of command I/F and COM setting, please see documents below.

LIUST-51-1AK/F-QM-R:

Product specification for TOSHIBA TEC Line Indicator Unit (LIUST-51)

LIUST-A10:

Product specification for TOSHIBA TEC Line Indicator Unit (LIUST-A10)

WD-1012000008 / WD-1012000018:

User's Manual of LED Customer Display (Model : WD-111)

3.5. MSR

About detail of command I/F and COM setting, please see documents below.

MCRST50(MCRST-50-3-QM-R):

Product specification for TOSHIBA TEC Magnetic Card Reader (MCRST50)

MCRST-A10:

Product specification for TOSHIBA TEC Magnetic Card Reader (MCRSTA10)

3.6. Keyboard

About detail of command I/F, please see documents below.

PKBST-50: ***Product specification for TOSHIBA TEC POS Keyboard (PKBST-50)***

PKBST-52: ***Product specification for TOSHIBA TEC POS Keyboard (PKBST-52)***

4. Notice and Limitation

4.1. Notice

4.1.1. About DOS

This document is written for MS-DOS 6.22.

If you use another DOS, you may have to adjust the difference of detail specification.

5.2. Limitation

5.2.1. Limitation about DOS

As DOS user already has known, if he uses DOS, basically he has to perform the responsibility in himself in current situation.

Of course, we can support as much as possible.

But he has to know this limitation about responsibility.